



WELCOME TO

MIND
PARK

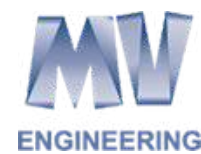
www.mind.rs

OUR ROADMAP



1990

Founded in
Krefeld,
Germany



2000

Business
expansion,
Serbia



2018

MIND Park,
Foundation



2024

MIND Park,
Today



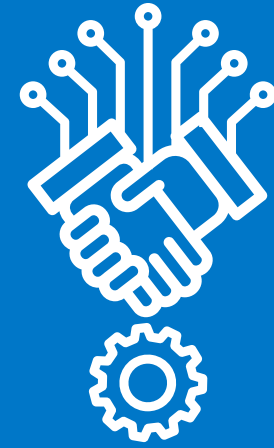
OUR VISION

To become the first integrated Technology, Production and Logistics Hub in South Eastern Europe.





Location



Technology



People



Sustainability

OUR PILLARS

WHAT MAKES MIND PARK AN EXCELLENT LOCATION?

One-Stop-Shop for investors around the globe



Landlord & Developer

KEY FOCUS

Railway, Aerospace, and High Tech industries

Opportunities for Investors



Land acquisition & Direct Investment



Built to suit -
For long term rent



Business Enablement Services:

Business set up
Business Support (HR, IT, H&S, etc.)
Build and design

Free trade agreements in Serbia:

- **EEU:** 184
- **EU:** 448
- **UK:** 68
- **TURKEY:** 83
- **USA:** 328
- **JAPAN:** 126
- **CHINA:** 18
- **AUSTRALIA:** 25
- **CEFTA:** 20
- **EFTA:** 14



TECHNOLOGY

Industries in MIND Park

- Production of components for Railway industry
- Production of trams
- Production of Aircraft components
- Nanotechnologies
- Electronics
- Logistics
- Water treatment
- R&D centers.

IMW Institute

for Quality Assurance and R&D Start-up centre

CENTRES divided in laboratories.

Centre for destructive and non-destructive metal tests and R&D centre.



CERTIFICATE

Accredited mechanical-metallographic and chemical laboratories in accordance with SRPS ISO / IEC 17025

LABORATORIES

for testing and research purposes with latest equipment incl:

- **Chemical laboratory**
- **Mechanical laboratory**
- **Metallographic laboratory**

RESEARCH

focused but not limited to:

- **Rail vehicle industry**
- **Mechanical engineering**
- **Latest technology & sustainability trends**

PEOPLE

Rich experience in training and education

- More than 500 people trained
- CNC operator
- Welder Aluminum & Steel
- Locksmith Operator
- Industrial Mechanic

Created Programs:

1. Dual educational profiles, curricula
2. Skills development programs
3. Trainer training
4. Higher education
5. 51 Dual Education Programs
6. Internships

International Collaboration

- Birmingham Centre for Railway Research and Education UK
- Fraunhofer Institute Germany
- Mazadar Institute Abu Dhabi
- SEE Institute Dubai

Education pool in Kragujevac

- University of Kragujevac
- 12 Faculties
- 20.000 Students
- Faculty for IT
- 30+ Students as Interns continuously



SUSTAINABILITY

01

First green field Eco-Industrial Parks (EIP) in the Western Balkans.

Supported by



02

Sustainability & E-mobility

- Environmental Protection
- Sustainability in production and construction, etc.
- Waste management
- Water Treatment
- Electric vehicles

03

Our focus

- Industry 4.0.
- Renewable energy sources
- Focus on new technologies

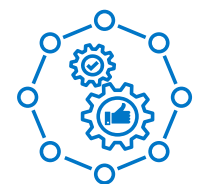




Built **85 000 m2**
(office and production space)



Invested : **90+ mil €**



Infrastructure: **190 ha** of land
Internal Roads
Electricity availability
Water Treatment Systems
Fiber Optics



19 Companies
(90% export oriented)



No. of Employees in MIND PARK
2000+

Key milestones 2018 - 2024

Completed projects

01

Avenio Siemens

Size: : 11.600 m²

Technology:

Production of parts for the rail industry

Tenant: Siemens
2019



02

Aluminium

Size: 7.900 m²

Technology:

- Production of parts for the rail industry
- Aluminum welding

Tenant AMM Manufacturing
2019



03

Paint shop

Size: 4. 500 m²

Technology:

Sandblasting

Tenant: AMM Manufacturing
2020



04

Steel

Size: 10.800 m²

Technology:

- Graphene nanotubes technology
- Manufacturing quality hammers and hand tools

Tenants: AMM Manufacturing, OCSiAl, Halder
2019





05

Hall 3

Size: 4.400 m²

Technology:

- Production of lifting systems for the automotive and railway industry

Tenant: IME-AUTOLIFT



06

Headquarters

Size: 11.000 m²

Purpose:

- Office space
- Event space
- Coworking space

Tenants: Multi Tenants 2021



07

Logistic centre phase 1

Size: 15.200 m²

Purpose:

Warehouse mainly steel

2024



08

Airport phase 1 : grass runway and hanger

Size: Runway: 900x45m

- Main runway: 960x60m
- Hangar dimensions: 22m x 30m x m

Tenant: MIND Aviation

Completed projects

09

Kindergarten

Size: 1.500 m²

**Tenants: Mini MIND
2021**



10

Canteen

Size: 2.500 m²

Technology:

- Catering and A la carte restaurant

**Tenants: Culinaris
2021**



11

Restaurant

Purpose:

- Traditional cuisine restaurant equipped with a special baking system

**Tenants: Culinaris
2022**



12

Sport Center

Equipment:

- PADEL TENNIS: Court 10m x 20m
- Football fields

**Tenants: SC Pampas
2022**



Future milestones 2024 - 2035



To be built: **+280.000 m2**



To be invested : **+270 M €**



Infrastructure: **+60 ha land**
+16 km Railway and dry port



Companies: **+50**
including Start-Up companies



No. of Employees in MIND PARK
+3000

Ongoing projects

INDUSTRIAL - TECHNOLOGY PARK

IN COLLABORATION WITH
MINISTRY OF SCIENCE
PROJECT DURATION 2024 - 2026

Key focus:

- Industrial and unconventional technologies
- New materials
- Industry 4.0
- Sustainability & E-mobility



REGIONAL TRAINING CENTER

IN COLLABORATION WITH OFFICE
FOR DUAL EDUCATION
PROJECT DURATION 2024 - 2026

Focus:

- Sustainability & Energy management
- Railway infrastructure and traffic
- Machining (CNC)
- Robotics
- Industry 4.0.
- E mobility

Ongoing projects



Production facility- IME-AUTOLIFT 2024- 2025



Harley Davidson Showroom 2024 - 2026



Recycling center 2024 -2025

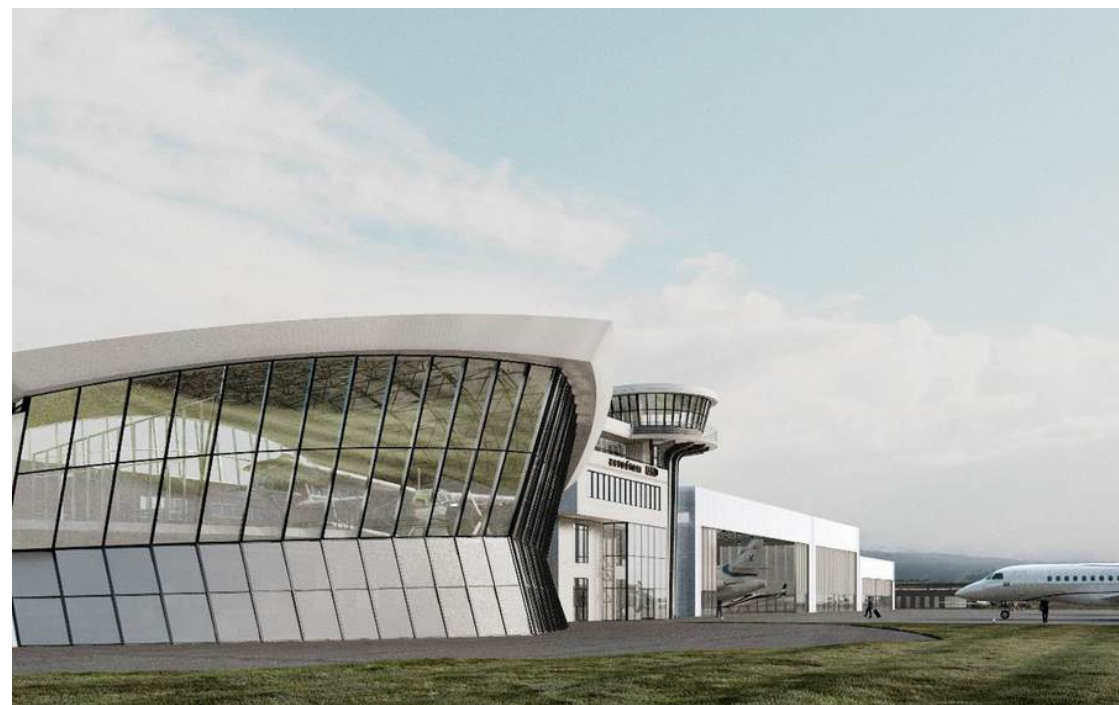


Custom terminal- 2024 -2025



Aero East - aircraft production 2025- 2026

MIND PARK FUTURE LOGISTICS EPICENTER



Airport 2025 - 2027



Dry Port & Cargo terminal 2026 - 2027



Railway Connection: 2024 - 2026



Sustainable City 2026 - 2030

Strategic projects

MIND PARK TENANTS

19 companies coming from
the following countries



Members of

MIND
GROUP

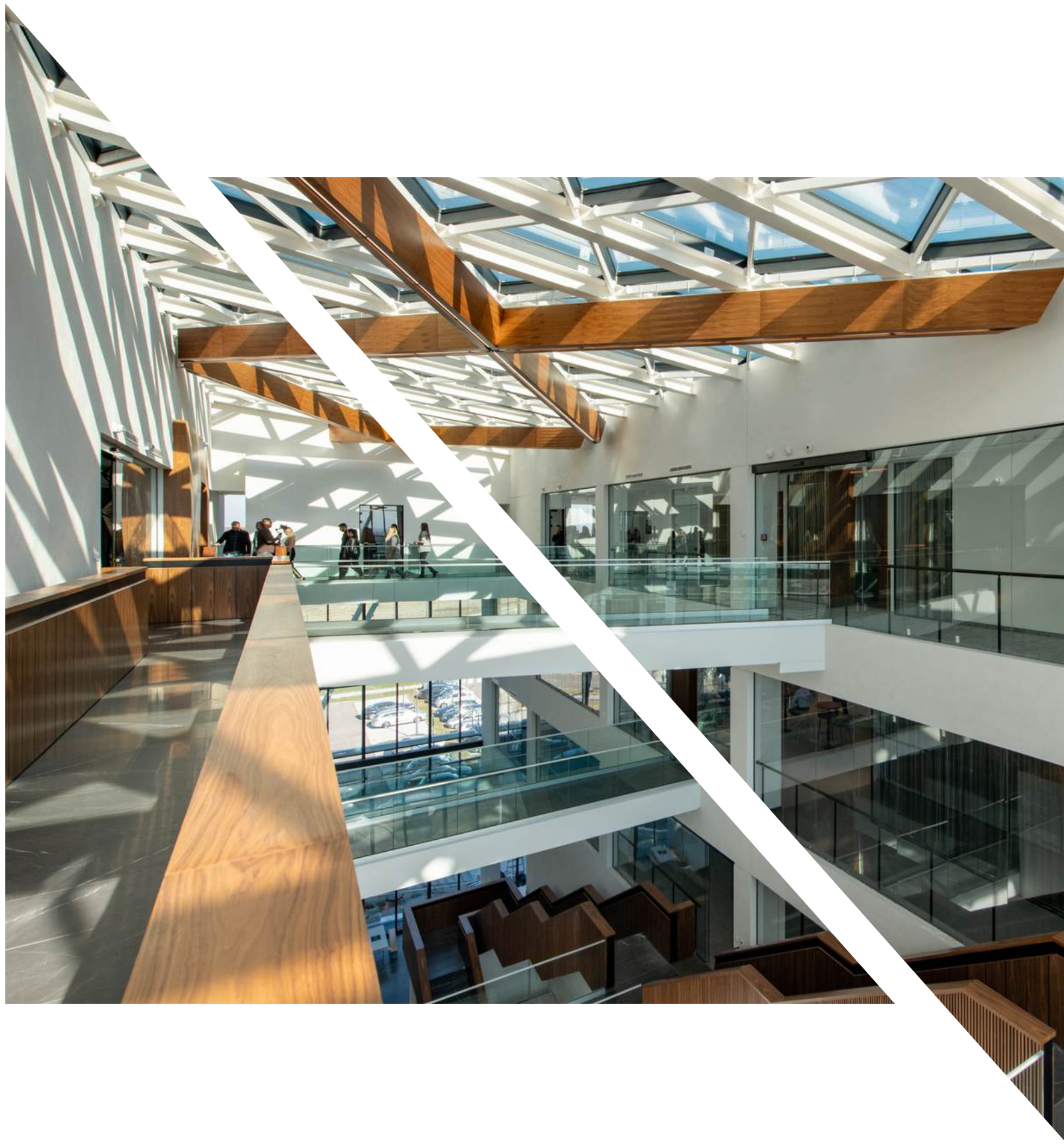




Greenfield project
2018



Master plan



OUR CONTACT



[Aleja Milanović bb,
34325 Kragujevac, Serbia](#)



www.mind.rs



info@mind.rs